

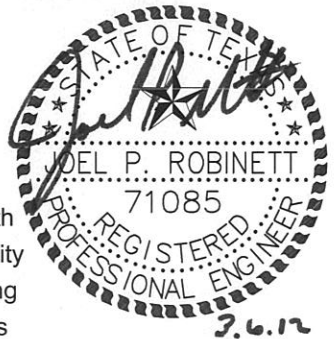
FOR ONE- AND TWO-STORY CONSTRUCTION

TYPICAL MONOLITHIC EXTERIOR FOOTING

S2

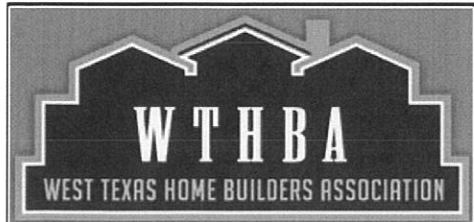
SCALE: 3/4" = 1'-0"

EXPOSED BRICK LEDGE



to be used in compliance with the requirements within the City of Lubbock's Adopted Building Codes & Local Amendments

MWM Architects, Inc. F-9245

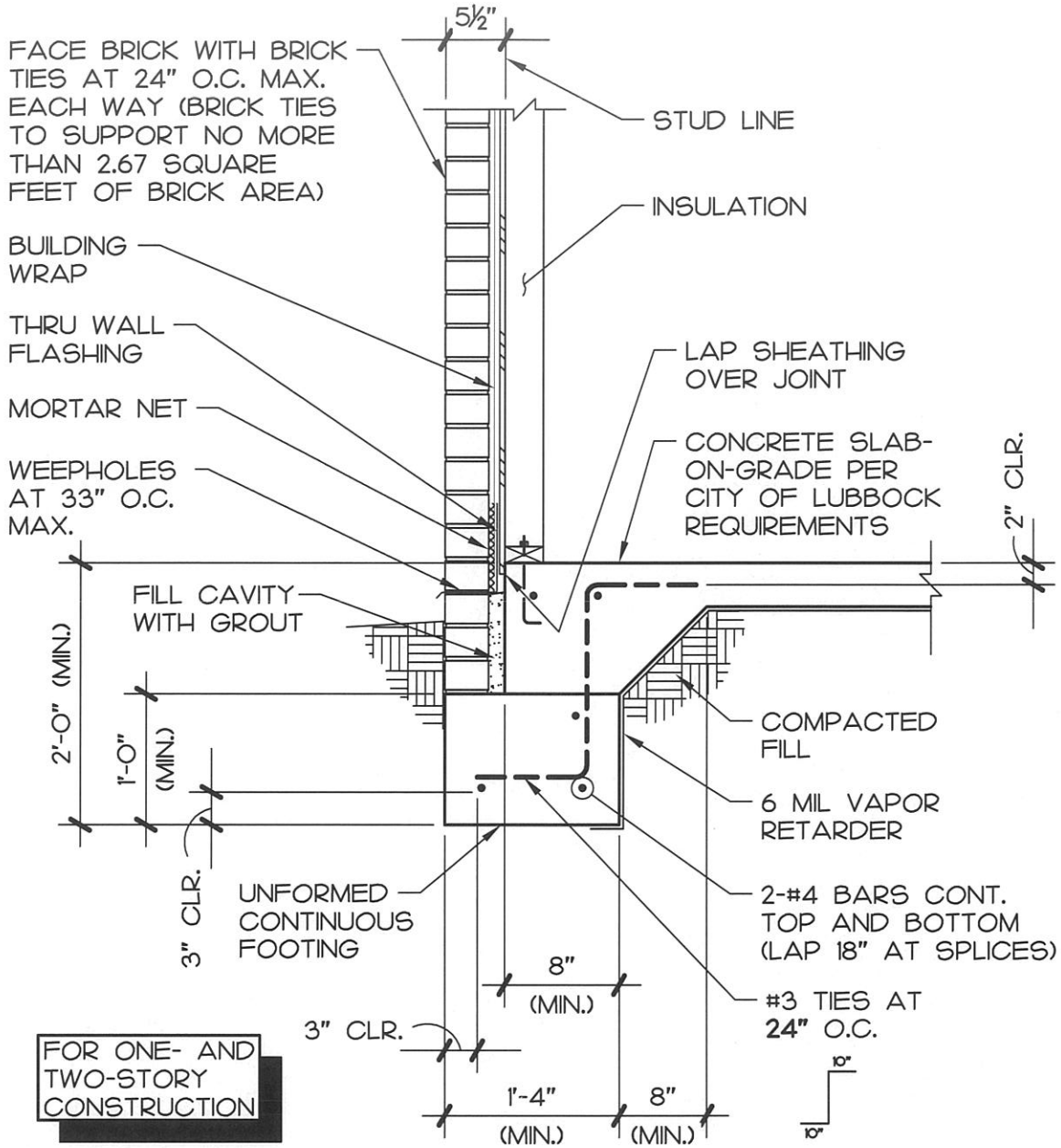


Foundation Details
for the City of Lubbock, TX

DATE: 3-6-12
SHEET:

Residential Foundation Details

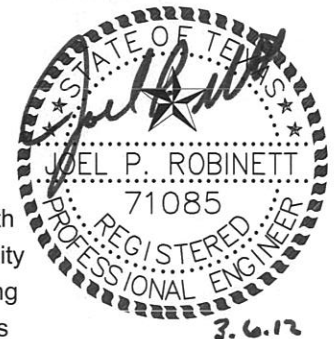
S2
of 8



TYP. TWO-POUR COMBINATION EXTERIOR FOOTING

S3

SCALE: 3/4" = 1'-0"



to be used in compliance with the requirements within the City of Lubbock's Adopted Building Codes & Local Amendments

MWM Architects, Inc. F-9245

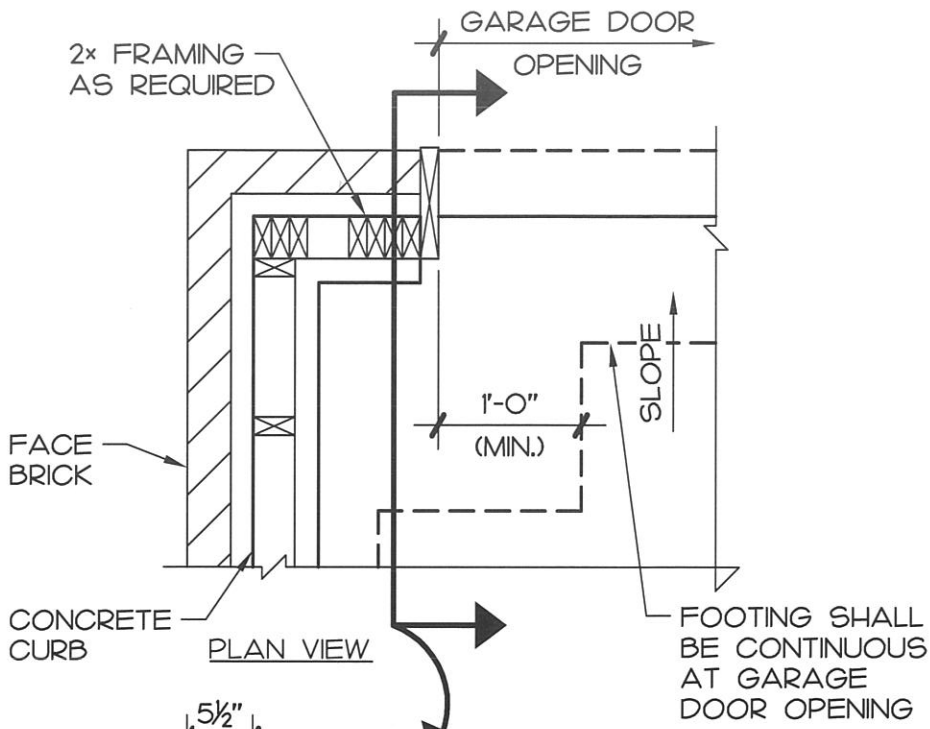


Foundation Details
for the City of Lubbock, TX

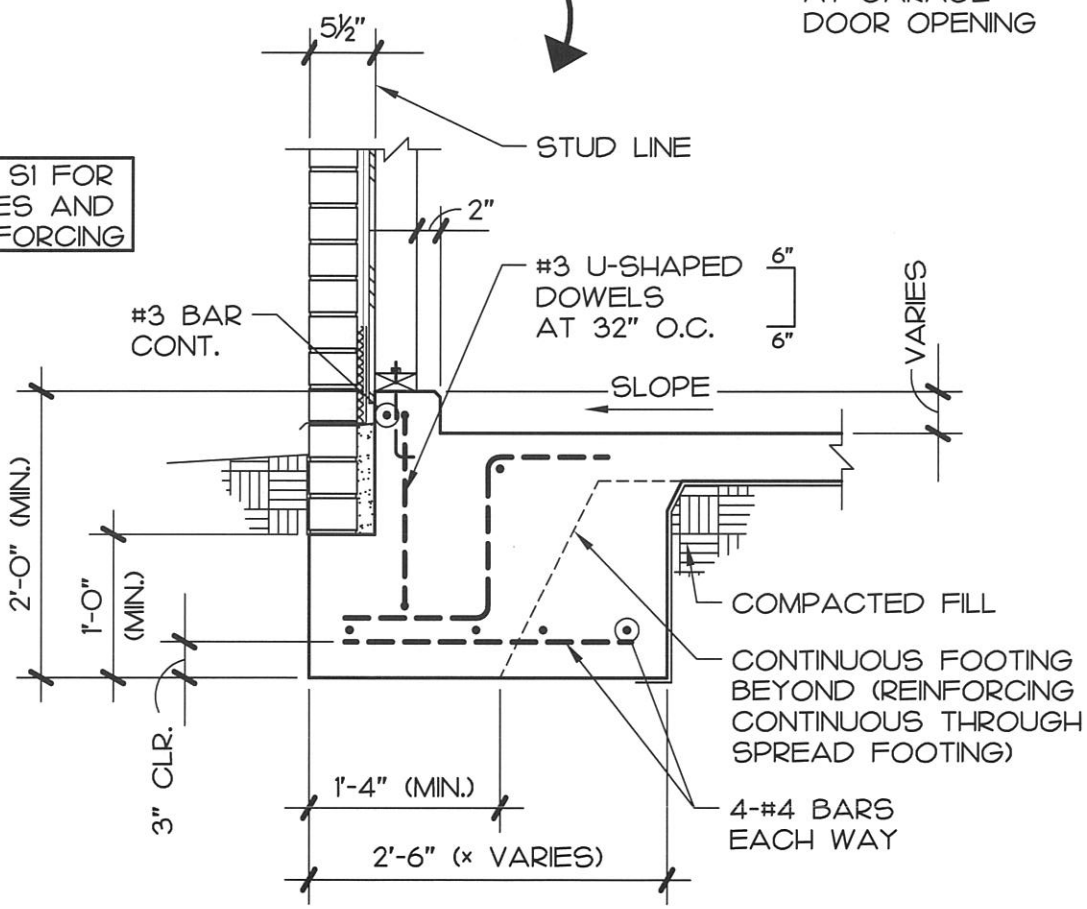
DATE: 3-6-12
SHEET:

Residential Foundation Details

S3
of 8



SEE S1 FOR NOTES AND REINFORCING



to be used in compliance with the requirements within the City of Lubbock's Adopted Building Codes & Local Amendments



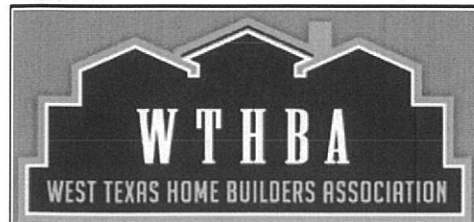
SPOT FOOTING AT GARAGE DOOR CORNER

BURIED BRICK LEDGE

S4

SCALE: 3/4" = 1'-0"

MWM Architects, Inc. F-9245



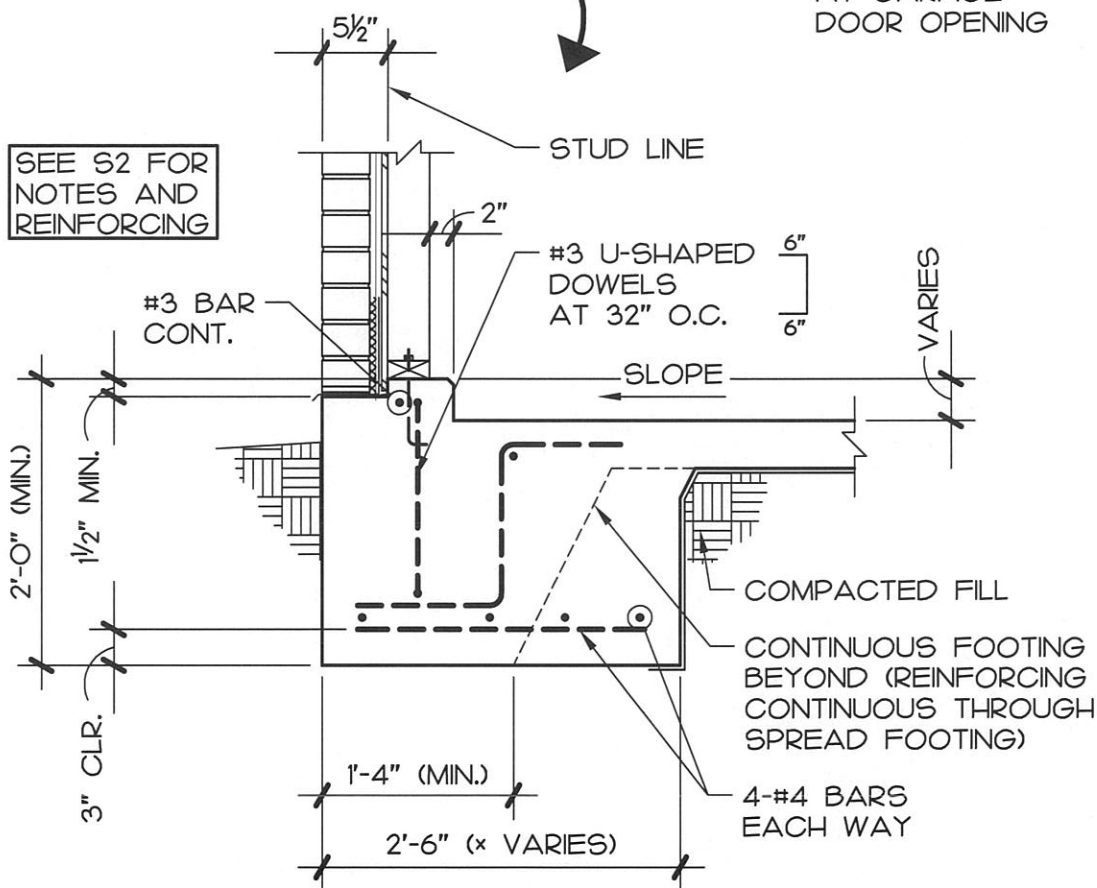
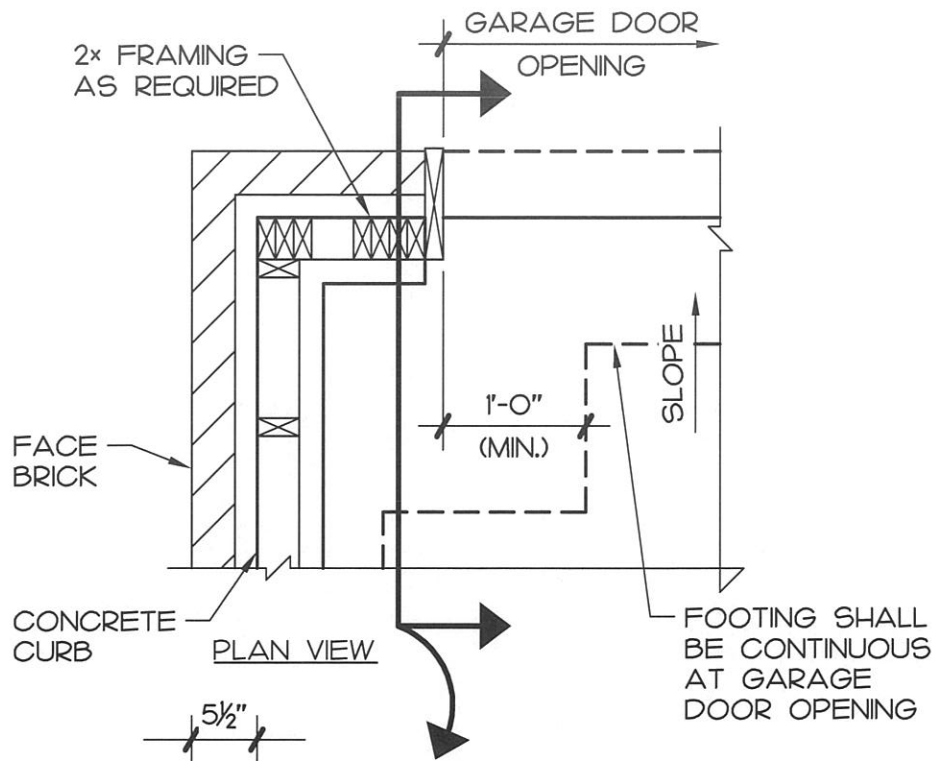
Foundation Details
for the City of Lubbock, TX

DATE: 3-6-12
SHEET:

Residential Foundation Details

S4

of 8



to be used in compliance with the requirements within the City of Lubbock's Adopted Building Codes & Local Amendments



3.4.12

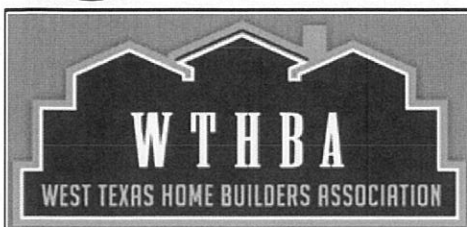
SPOT FOOTING AT GARAGE DOOR CORNER

EXPOSED BRICK LEDGE

S5

SCALE: 3/4" = 1'-0"

MWM Architects, Inc. F-9245



Foundation Details

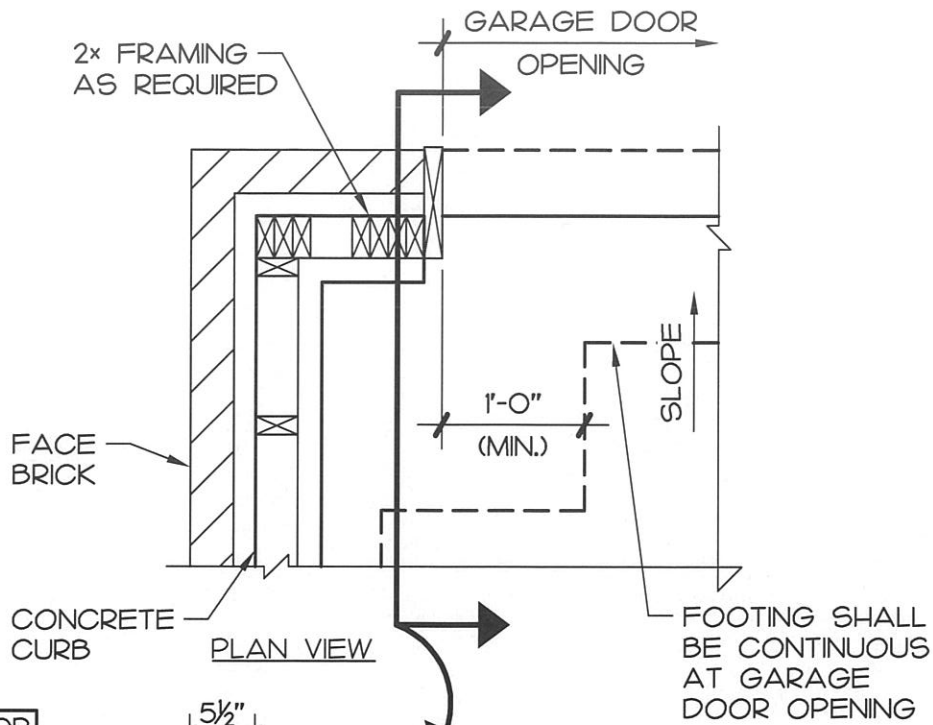
for the City of Lubbock, TX

Residential Foundation Details

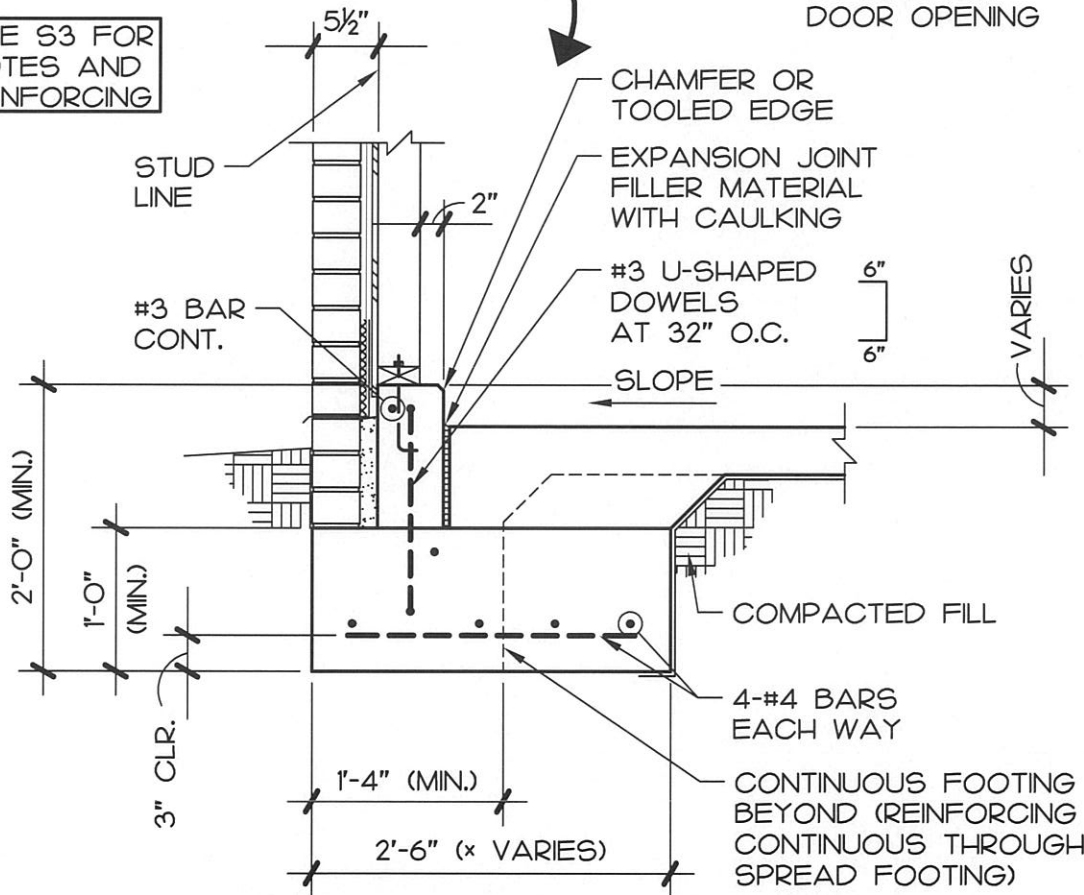
DATE: 3-6-12
SHEET:

S5

of 8



SEE S3 FOR NOTES AND REINFORCING



to be used in compliance with the requirements within the City of Lubbock's Adopted Building Codes & Local Amendments

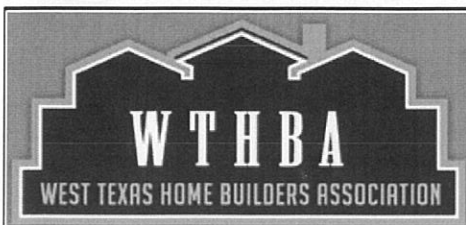


TWO-POUR SPOT FOOTING AT GARAGE DOOR OPENING

S6

SCALE: 3/4" = 1'-0"

MWM Architects, Inc. F-9245



Foundation Details

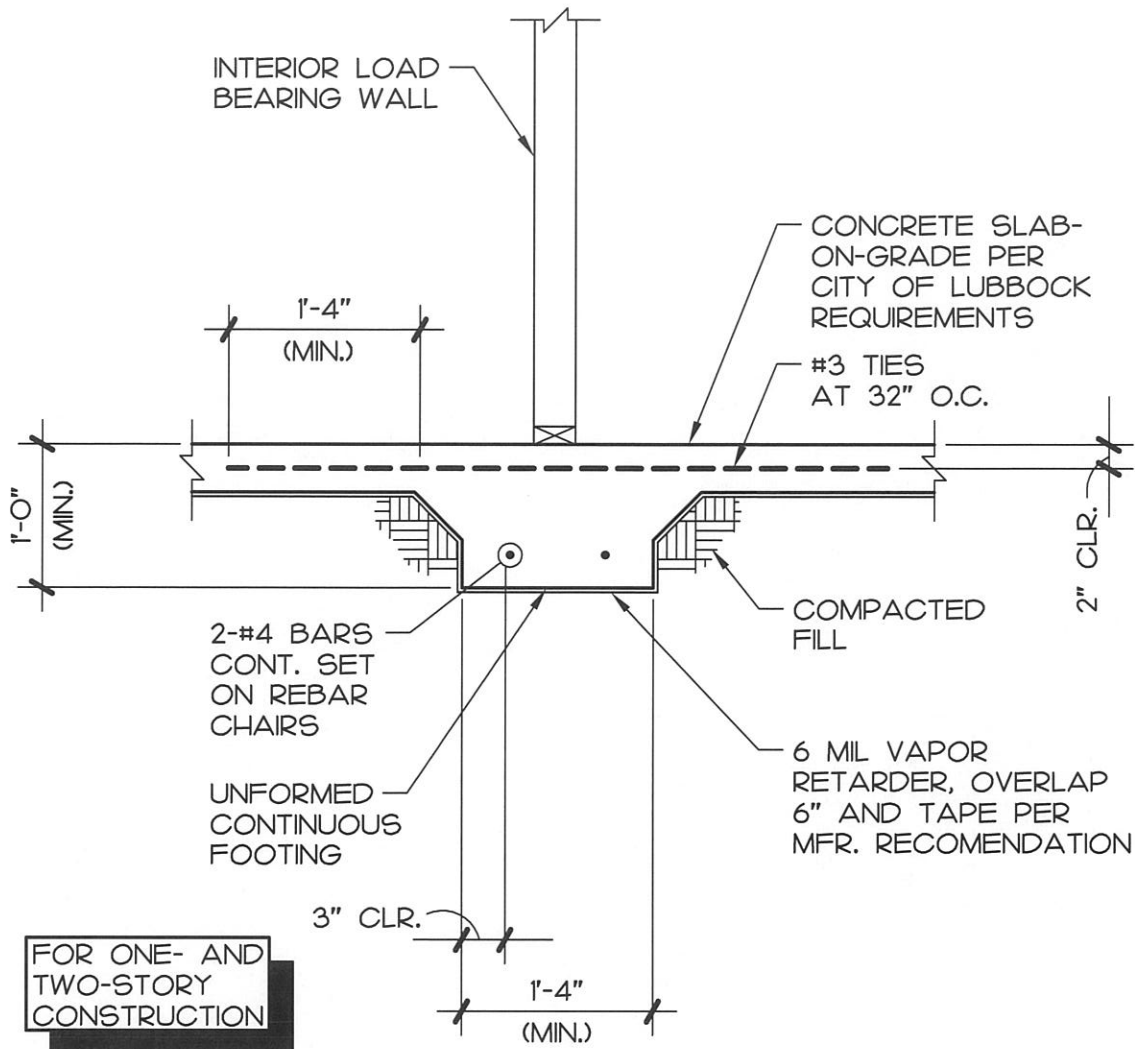
for the City of Lubbock, TX

Residential Foundation Details

DATE: 3-6-12
SHEET:

S6

of 8



CONTINUOUS FOOTING FOR INTERIOR LOAD BEARING WALL

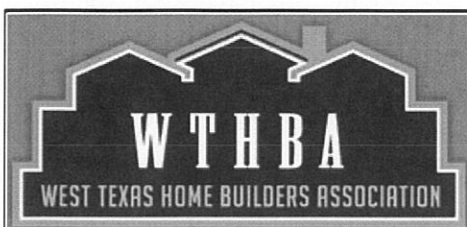
S7

SCALE: 3/4" = 1'-0"



to be used in compliance with the requirements within the City of Lubbock's Adopted Building Codes & Local Amendments

MWM Architects, Inc. F-9245



Foundation Details

for the City of Lubbock, TX

Residential Foundation Details

DATE: 3-6-12
SHEET:

S7

of 8

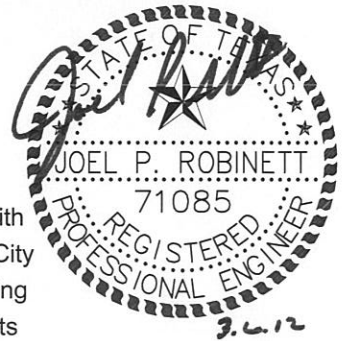
Following are additional comments to builders as a reminder to consider when selecting foundation details:

1. On lots that require more than two feet of fill at any point, check with the Inspection Department for direction as to needs for Engineered Foundation requirements.
2. Requirement of sand fill
3. Requirement of vapor retarder
4. Requirement of proper fill material and compaction of all trenches in foundation.
5. Consider where concentrated load points will occur and consider additional concrete support at those locations.
6. Adjust footings at zero lot lines not to encroach on adjacent lot.
7. Consider footings and foundations details at basement locations and its impact on main floor foundation above.
8. Note requirements for termite treatment
9. Builder should be knowledgeable about existing natural soils, information from developer or perform test to determine soils information prior to construction on lot.



ADDITIONAL FOUNDATION NOTES

NO SCALE



to be used in compliance with the requirements within the City of Lubbock's Adopted Building Codes & Local Amendments

MWM Architects, Inc. F-9245



Foundation Details

for the City of Lubbock, TX

Residential Foundation Details

DATE: 3-6-12
SHEET:

S8

of 8