



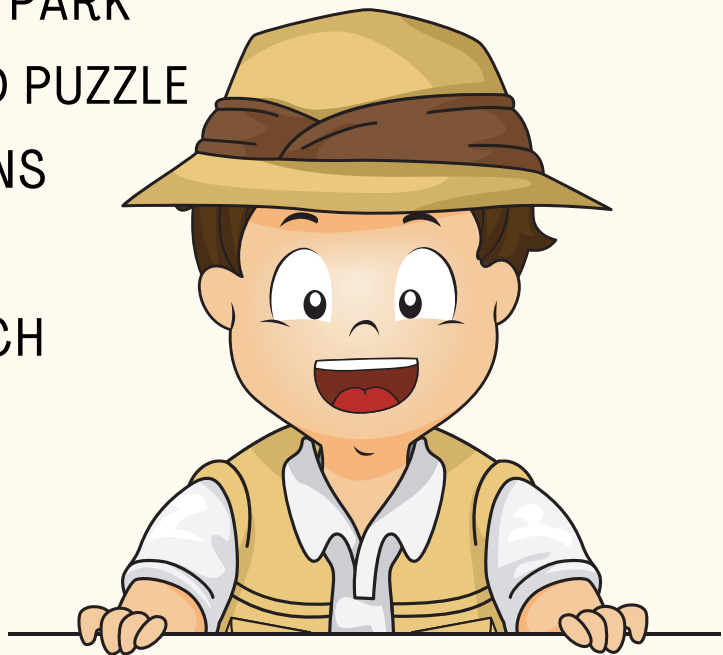
KIDS PARK PASSPORT





Table of Contents

PASSPORT ID	1-2
STAMP PAGE	3-4
LUBBOCK PARK'S MAP	5
HUB CITY FACTS	6
AZTLAN PARK AND BUDDY HOLLY REC. AREA	7
BUDDY HOLLY COLORING SHEET	8
BUTLER AND CLAPP PARK	9
ACTIVITY: CREATE YOUR OWN PARK BADGE	10
ELMORE AND HENRY HUNEKE PARK	11
FISHING COLORING SHEET	12
JENNINGS AND LEFTWICH PARK	13
ACTIVITY: CREATE AS MANY WORDS AS POSSIBLE	14
MACKENZIE AND MAXEY PARK	15
PRAIRIE DOG TOWN COLORING SHEET	16
MILLER AND RAWLINGS PARK	17
ACTIVITY: CROSSWORD PUZZLE	18
RODGERS AND SIMMONS	19
OWL COLORING SHEET	20
ACTIVITY: WORD SEARCH	21
DID YOU KNOW?	22





(Signature of Park Ranger)

LUBBOCK, TEXAS

PARK
PASSPORT

Type	Code	Passport No.
P	LBK	000000001

First Name

Last Name

Nationality

LUBBOCK, TEXAS

Date of Birth

Place of Birth

Sex

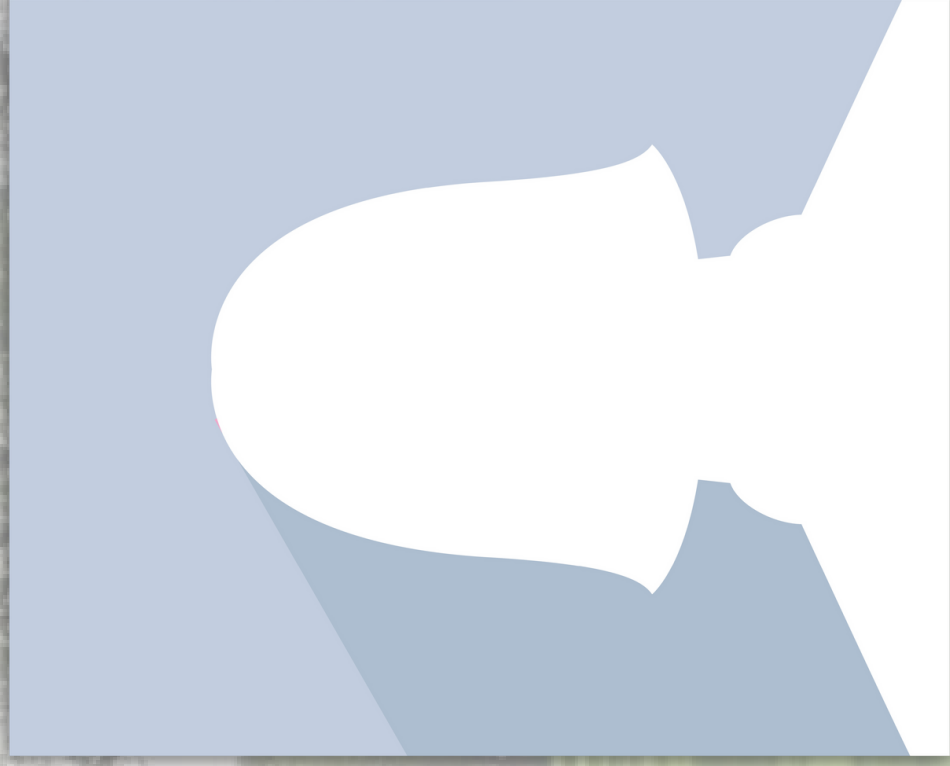
Date of Issue

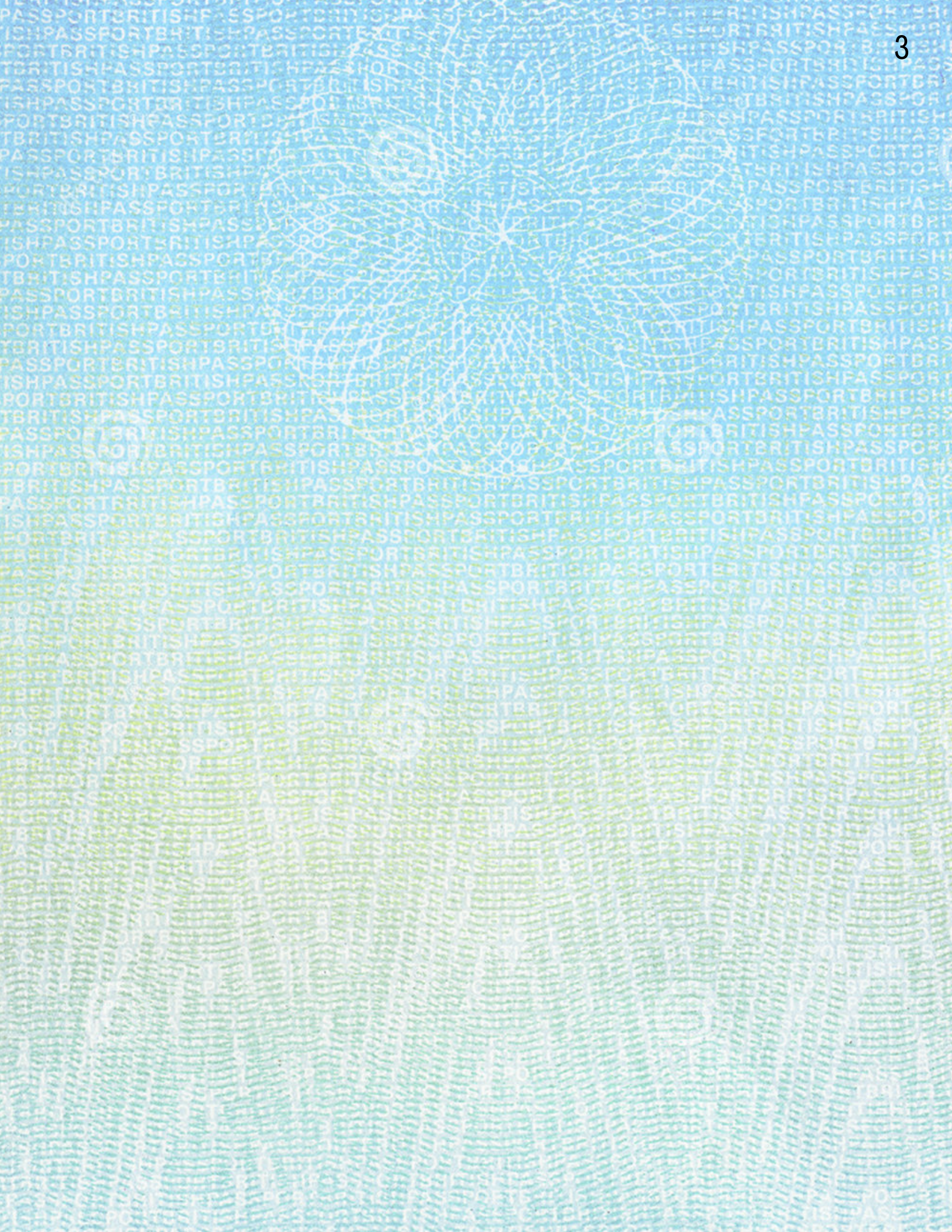
Authority

Lubbock, TX

Date of Expiration

Forever a Park Ranger







PARKS PASSPORT MAP

Let's Start Your Journey!



Want to Use Our Online
Interactive Map?
Scan Me!

HUB CITY

Where did the nickname Hub City come from?

The nickname is related to Lubbock's accessible location on the crossroads of Interstate 27 and four major U.S. highways, in the central time zone, equal-distance to both coasts, allowing for ease of U.S. distribution.

Fact

Lubbock is known to be windy. This is due to Lubbock being flat on the Llano Estacado (a region in the Southwestern US), making Lubbock the 3rd windiest city in America!

Climate (Average Per Year)

Rainfall 20.1 inches
Snowfall 7.1 inches
Precipitation 59.9 days

Sunny 264 days
Average Wind Speed 12.4 mph

Endangered Species in Lubbock County

Bald Eagle, Western Burrowing Owl, Mountain Plover, American Bumblebee, and the Eastern Spotted Skunk.



Aztlan Park

History:

After the creation of Lubbock and the installation of the railroad in 1909, many cowboys started living in the area. This park was the original location of some of those first settlements for the cowboys.

1st Street and Avenue K



Buddy Holly Recreation Area

About:

Did you know... Buddy Holly Rec Area is named after the iconic Buddy Holly, a Pioneer of Rock and Roll? This Recreation area has benches, fishing, a walking track, Fiesta Plaza, Quest Memorial Grove, and Fountain. Visit this rockin' recreation area today!

North University and Cesar Chavez Drive





Butler Park

About:

Butler Park is known for their beautiful basketball court mural. With the help from the East Lubbock Art House, the mural highlights the connections of the East Lubbock neighborhoods. During the creation of the park, many stopped to give a helping hand. It is a great example of the community coming together to support their local parks.

East 4th Street and Zenith Avenue



Clapp Park

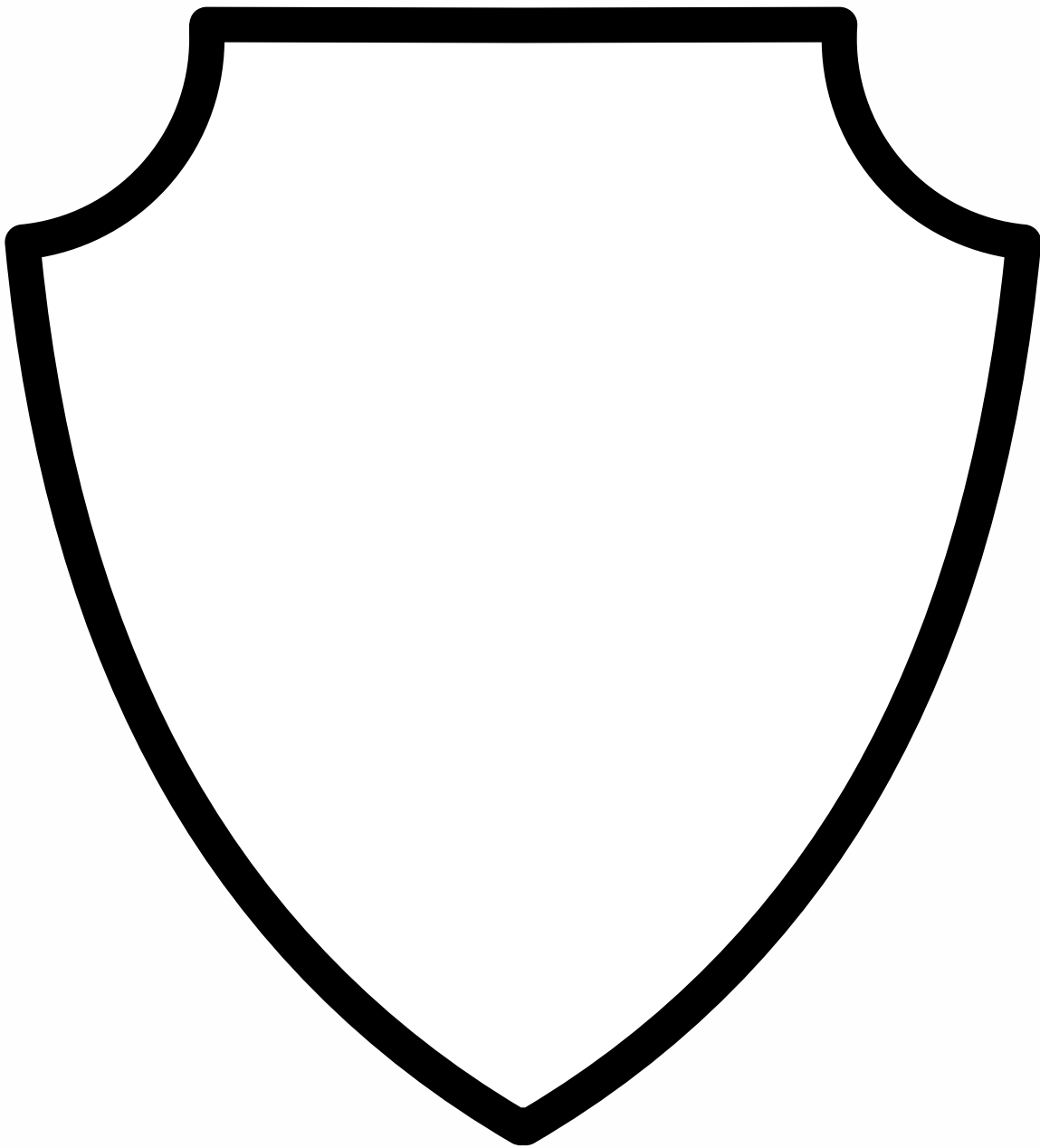
About:

Clapp Park is one of the largest parks, located right in the middle of down town Lubbock. The Park has many different features which include: Lubbock Memorial Arboretum, the Garden and Arts Center, the "Hodges Field" baseball field, a basketball court, a flag football field, Hodges Community Center, and MUCH MORE!

46th Street and Avenue U



CREATE YOUR PARK RANGER BADGE!



Elmore Park

About:

Elmore Park is a great area to have a nice stroll. There are walking trails, shaded benches, and a quaint fishing area. Make sure to get your fishing license from TPWD before you take to the playa. Looking for a more active day? Enjoy the tennis and pickleball courts with a beautiful view of the playa.

66th Street and Quaker Avenue



Henry Huneke Park

About:

Bring your best salutes as you pay your respects to two timeless memorial sites, the Lubbock Area Veterans War Memorial and the Willie McCool Memorial. These Memorials are in honor of our veterans and leaders who have inspire our community over the years.

82nd Street and Nashville Avenue





Jennings Park

About:

Jennings Park has many different activities including fishing, a basketball court, a playground, a volleyball court, and since 2019 a walking trail was added!

73rd Street and Winston Avenue



Leftwich Park

About:

Did you know... Leftwich Park is named after A. M. Leftwich who donated a portion of this 59.63 acre park? This park offers fishing, benches, a picnic area, and playground. Not too mention, Burgess Rushing Tennis Center is located here! Come visit this beautiful park today!

Challenge: Try the world's fastest growing sport, Pickleball, at the Tennis Center!

60th Street and Elgin Avenue

CREATE AS MANY WORDS AS YOU
CAN WITH THE WORD:

R E C R E A T I O N





Mackenzie Park

About:

Mackenzie Park is the biggest park in Hub City! Home to the classic Lubbock attractions such as: Prairie Dog Town, Joyland Amusement Park, Canyon Run Dog Park, and Meadowbrook Golf Course. Ever heard of Santa Land? Yep, you guessed it, Santa Land is also hosted in Mackenzie Park during the month of December!

Bonus: Check out the Moonlight Amphitheatre shows during the summer months.

301 Interstate-27



Maxey Park

About:

With a community center, pool, baseball fields, and the HealthBeat workout outdoor equipment, you can use Maxey for any and all of your recreational needs. Do you like to exercise? Try one of the equipment pieces at the park for a new adventure.

30th Street and Nashville Avenue



Miller Park

About:

Feel like taking a walk? Miller Park has a 1.5 mile walking trail. In addition, the park has a volleyball court and playground!

Challenge: Try to beat 20 minutes to complete 1 lap around the trail.

Memphis Avenue and Memphis Drive



Rawlings Park

About:

A picnic area, basketball court, tennis court, playground, and Copper Rawlings Community and Senior Center are just a few things Rawlings Park has to offer. The Community Center has programs for Adult Leisure Classes, an After School Program, and Senior Citizen Programs provided for the community!

40th Street and Avenue B



Lubbock's Crossword Puzzle



DOWN:

1. is a soft, fluffy, stable fiber grown here in Lubbock County
2. Lubbock's Biggest Park
3. A Famous Singer-Songwriter that was born in Lubbock
4. Forever a Park BLANK

ACROSS:

1. Lubbock's Nickname
2. BLANK and Recreation
3. This Month celebrates National Parks and Recreation
4. This Animal is all over Lubbock County

Rodgers Park

About:

Rodgers Park offers outdoor recreation and nature preservation. With Rodgers Gym, Maggie Trejo Supercenter, Montelongo Pool, and a multi-use court you are guaranteed a great time!

Amherst Street and Gary Avenue



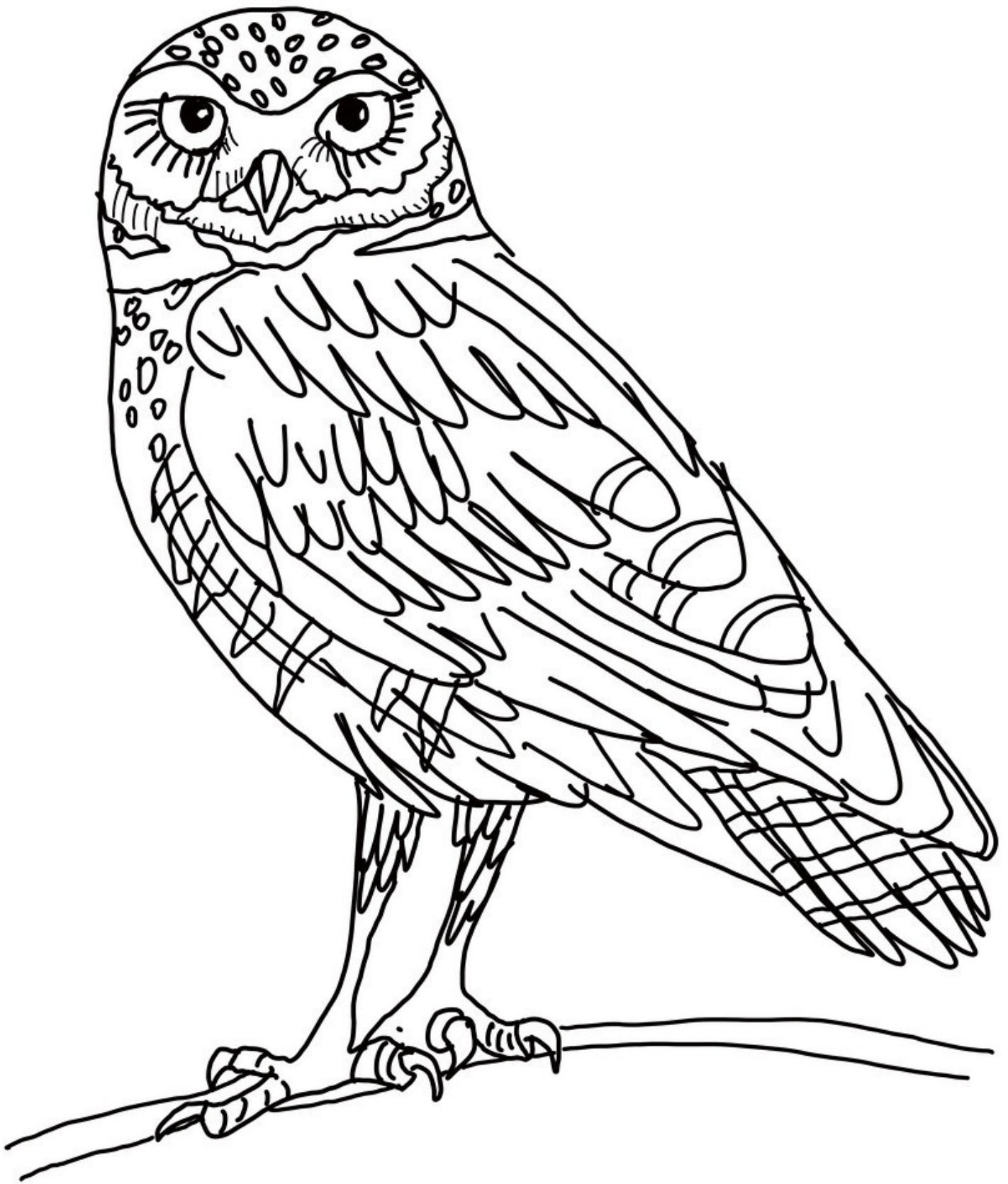
Simmons Park

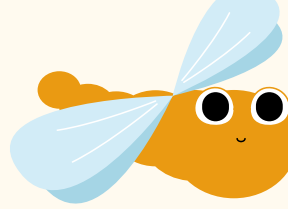
About:

Right across the street from Dunbar Lake (Lake 1 of the playa lake system), Simmons Park offers a unique spin to a day in the park. Visit the community center for a game of billiards, rent some paddle boards with the family and set out on an adventure on the playa, or set up a picnic under the pavilion for a relaxing afternoon.

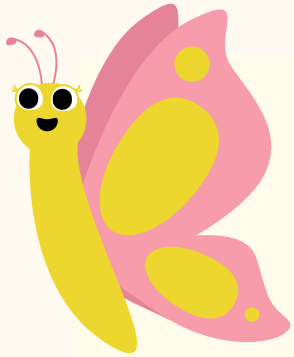
East 23rd Street and Oak Avenue



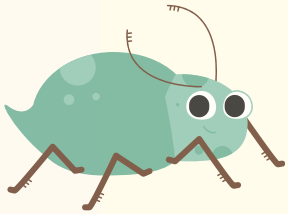




FIND THE ENDANGERED SPECIES!



E O B U M B L E B E E G W Y B
A D G U L L Y Z S H R P H P C
O B W X U I V W A B Y L N Y M
G L V S U A P Z H P T O A D A
U A U B T E R C H A G V T K C
Q C G E G U A Z W M Y E F I U
G K M V X N I N A P J R E F I
K R A Y N B R S D R D M Z U P
Z A B A T M I N J O E Z J D Q
C I A H C S E E G X I D S Q R
A L G B A L D E A G L E B B R
L G N R B E O I Q O Q A Z A E
B O G W N N G V O W L Q X N T
R U T D A J Q H A W K H B J A
A Q H X U S K U N K T D H U X



Prairie Dog

Black Rail

Bald Eagle

Plover

Skunk

Red Bat

Toad

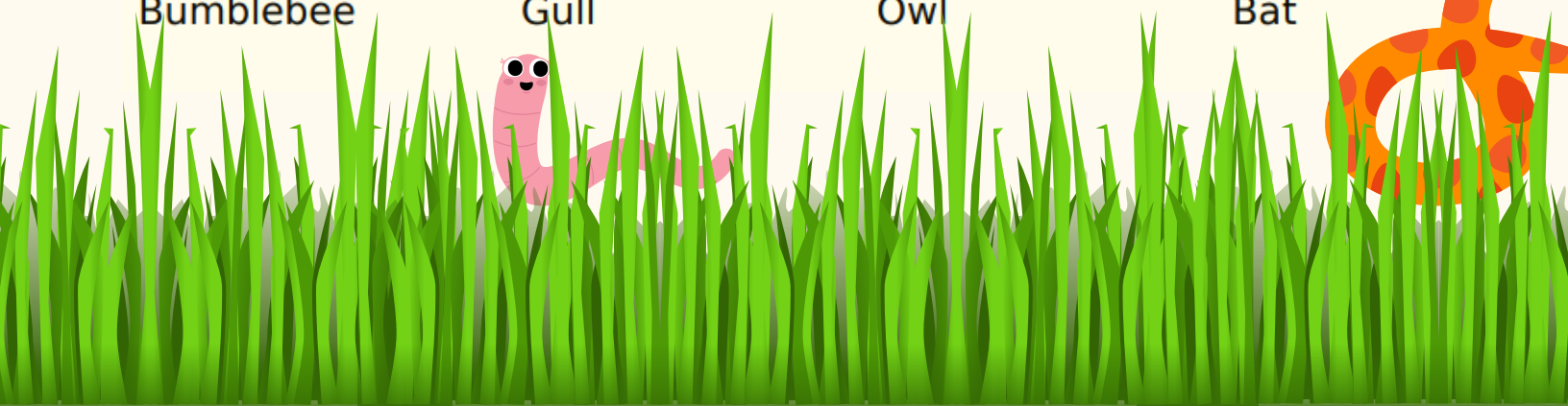
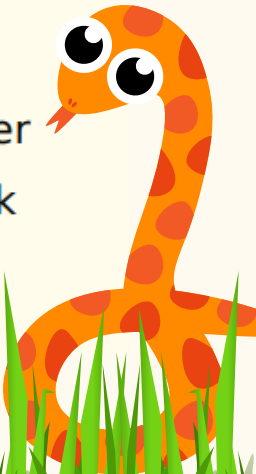
Hawk

Bumblebee

Gull

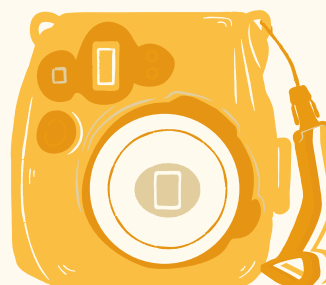
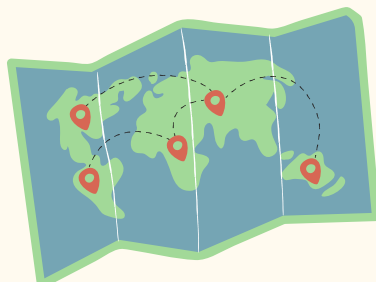
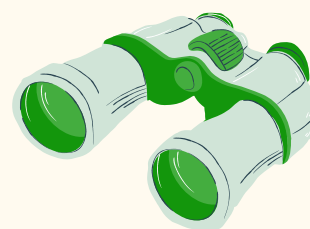
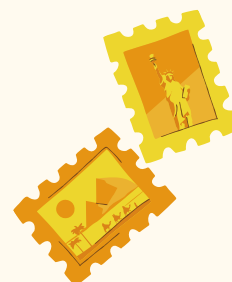
Owl

Bat



DID YOU KNOW LUBBOCK HAS 83 PARKS?

SCAN THE QR CODE TO SEE ALL THE PARKS





Want to Learn More About Lubbock Parks And Recreation?

[Click HERE to Continue the Adventure!](#)



(806) 775-2687
1314 Avenue K
Lubbock, TX 79401
www.playlubbock.com

